

HIGH-VELOCITY FLUSHING

WHY CHOOSE IAS?

Don't Wait Until Catastrophe Strikes?

Prevent The Chain Reaction Of Wear!



Industrial Action Services ("IAS") can save your plant millions in forced outages. Whether triggered by new equipment installation, sudden failure, or gradual contamination build-up, IAS provides the turnkey services necessary to manage, monitor and advance all phases of your plant's equipment reliability objectives.

Ensure A Reliable Start-Up...Flush And Decontaminate Your Equipment After:

- New Installations
- Sudden Failures
- Gradual Contamination Build-Up
- Scheduled Outages & Plant Turnarounds

In today's world of sophisticated equipment and OEM warranties, rely on IAS to ensure that your equipment and its fluid systems are operating within specification.

- Turn-Key Service – Minimal Support Required
- Fast, On-Time Completion
- Exceed OEM / Industry Requirements
- Real-Time Analysis And Reporting Included
- 24/7 Management By Trained & Certified Technicians
- Extensive Personnel & Equipment Resources

The IAS process utilizes the latest technologies and equipment to complete your project On-time and On-budget. Most Projects also Include Firm Pricing.

- Auxiliary "Jumper" Hoses & Piping Provided
- Pipe-Fitting Included – Turn-Key
- High-Velocity Flow – Reynolds Numbers >25,000
- Full-Flow Sub-Micron Filtration
- Minimal Project Footprint
- Procedure-Based Operations
- Chemical Cleaning Capabilities
- Real-Time, Laser Particle Counting & On-Site Testing
- Engineered Process Units
- Supplemental Vacuum Dehydration
- Confined-Space Reservoir Decontamination
- Self-Powered Options – No Electrical Support Required
- Emergency Response – 24/7

Contact Information:

Represented By Eric Levitt
Reliable Contamination Control LLC
(704) 798-6901 - Direct Mobile
(704) 257-6686- Corporate Office
www.rccnow.com

SPEED • PRECISION • RELIABILITY



PROOF OF PERFORMANCE

Equipment Decontamination *Process Results*



Contaminated Reservoir



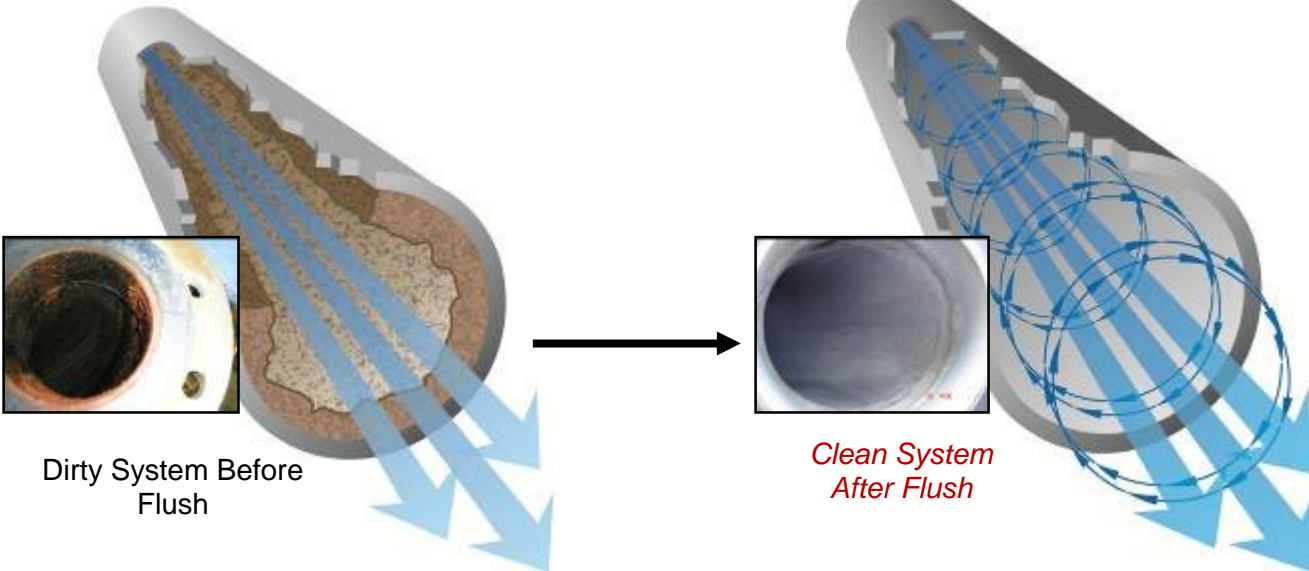
Clean Reservoir



Corroded Line



Chemically Cleaned Line

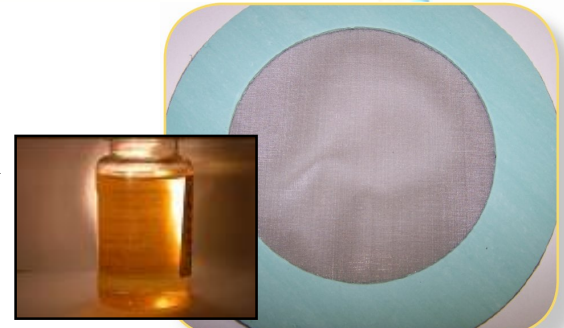


Dirty System Before
Flush

*Clean System
After Flush*



Initial Contamination
ISO Particle Count: 24/23/21



No Contamination
ISO Particle Count: 11/9/6