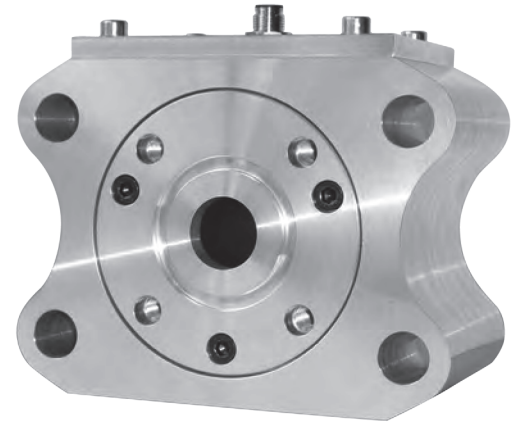
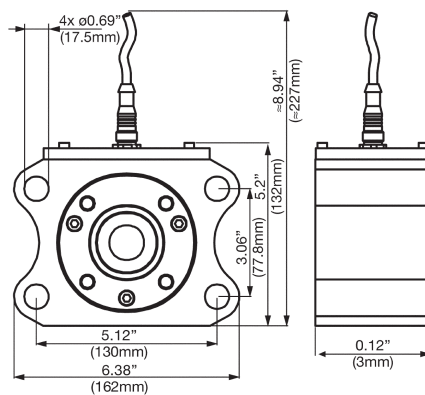


TestMate® Series

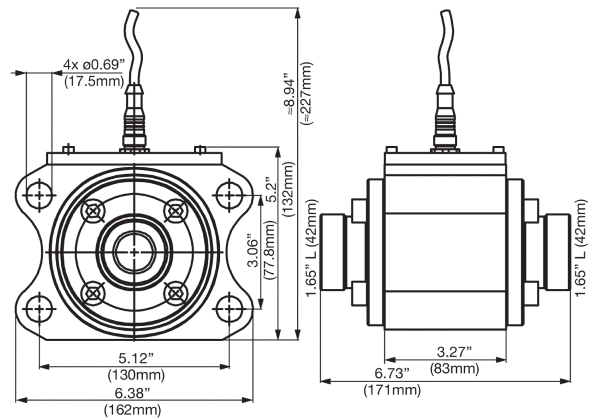
TMS TestMate® Metallic Sensor



Flange connection, SAE 4" according to ISO 6162-1



MCS with accessory flange adaptor set (optional)



Dimensions are for general information only, all critical dimensions should be verified by requesting a certified print.

Metric dimensions in ().

Description

The TestMate® Metallic Sensor TMS detects metallic solid particle contamination in lubrication fluid. The particles are determined according to the inductive measurement process, in which a coil system is the key element of the sensor. Metallic particles (ferromagnetic Fe and nonferromagnetic nFe) in the > 200 µm size range are detected.

The TMS continuously monitors the status of the system and gives information on imminent gear unit damage. This makes the sensor a reliable instrument for status-oriented maintenance.

Features

- Early detection of imminent gear unit damage
- Prevention of expensive plant downtime
- Optimal supplement to optical sensors
- Measurement of metallic particles (ferromagnetic and nonferromagnetic) > 200 µm
- Measurement result is not affected by air bubbles or liquid contamination in the liquid

Applications

- Gear boxes for wind energy
- Paper machine bearings

TestMate® Series

General Data:	Ambient Temperature: -40°F to 158°F (-40°C to +70°C)
	Diameter Sensor Cross-section: 1" (25.4 mm)
	Protection Class to DIN 40050: IP 67
	Weight: approx. 8 lbs. (3.5 kg)
	Dimensions (L x W x H): 3.27" x 6.38" x 5.5" (83 x 162 x 140 mm)
	Vibration: 10 - 58 Hz: 0.75 mm (amplitude) 58 - 500 Hz: 10 g (acceleration)
	Shock: 40 g
Hydraulic Data:	Flow Rate: 2.6 to 53 gpm (10 to 200 l/min)
	Operating Pressure: 290 psi (20 bar)
	Fluid Temperature Range: -40°F to 185°F (-40°C to +85°C)
	Inlet/Outlet: Flange connection, SAE 4" according to ISO 6162-1
External Electrical Data:	Supply Voltage: 9 - 36 VDC, residual ripple < 10%
	Power Consumption: 5 W max.
Internal Electrical Data:	2 Configurable Switching Outputs: 1 x Ferromagnetic particles (Fe) OR 1 x Non-ferromagnetic particles (nFe) OR 1 x Ferromagnetic particles (Fe) + Non-ferromagnetic particles (nFe) OR 1 x Status Signal <i>(n-switching Power MOSFET, normally-open)</i>
	Alarm Relays Capacity: 1.5 A max.
	RS485 Interface: 2 wire, half duplex
	HSI Interface: 1 wire, half duplex
Detection Limits:	Ferromagnetic (Fe) Particles: 200 µm (particle, whose volume corresponds to a sphere with Ø 200 µm)
	Non-ferromagnetic (nFe) Particles: 400 µm (particle, whose volume corresponds to a sphere with Ø 400 µm)
	Max. Particle Count: 100 / s at a pulse duration of 7 ms at the signal output

We do not guarantee the accuracy or completeness of this information. The information is based on average working conditions. For exceptional operating conditions please contact our technical department. All details are subject to technical changes.

How to Build a Valid Model Number for a Schroeder TMS:

BOX 1	BOX 2	BOX 3	BOX 4	BOX 5	BOX 6
TMS					

Example: NOTE: One option per box

BOX 1	BOX 2	BOX 3	BOX 4	BOX 5	BOX 6
TMS	1	S	F	1	

BOX 1	BOX 2	BOX 3	BOX 4
Model	Particle Size	Fluid	Connection
TMS	1 = Particles > 200 µm	S = Standard (Hydraulic or lubricating fluids)	F = Flange, 4" SAE
BOX 5	BOX 6		
Electrical Connection	Options		
1 = 9-36 V DC	Omit = None		

- TMS
- O-ring (47.22 x 3.53 NBR 70 Shore)
- SAE 4" Flange adaptor set for pipe or hose connection. 42L according to ISO 8431-1 Consisting of 2x Flange adaptors, 2x O-rings, 8x Cylinder screws, 8x Washers, 8x Spring Washers
- Flange adaptor plate, SAE 4" - SAE 1-1/2"
- O-ring (110.72 x 3.53 NBR 70 Shore)
- Operating and maintenance instructions
- Socket plug (female) with 3 m line, shielded, 8-pole, M12x1 (P/N TCM-C-3M)
- Socket plug with screw clamp, 8-pole, M12x1

Specifications

- TCM
- TCM-FC
- TSU
- TMU
- TPM
- TIM
- TMS**
- CTU
- TWS-C
- ET-100-6
- HMG 3000
- EPK
- HTB
- GS
- Trouble Check Plus
- Test Points
- Adapters
- Hose Joiners
- Microflex Hose
- Pressure Limiters
- Pressure Gauges
- Test Kits
- Probalizer
- Filtration Station
- MFS, MFD
- AMS, AMD
- KLS, KLD
- AKS, AKD
- KLC
- X Series
- MTS
- HFS
- SVD
- TDS-A
- TDS-E
- IXU
- Appendix

Model Number Selection

What's Included

Available Accessories